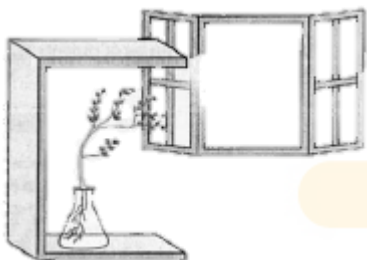


THEORY QUESTIONS

1 Mark:

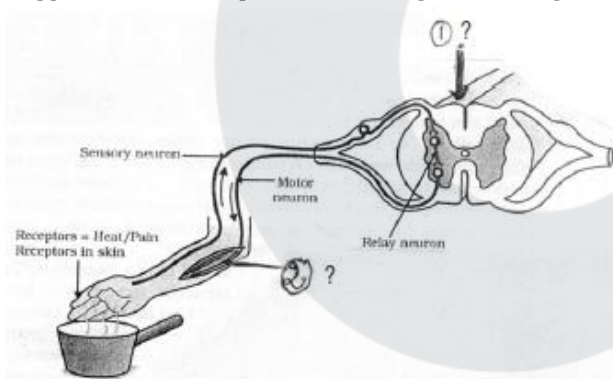
1. How is the spinal cord protected in the human body? [CBSE 2010]
2. Which organ secretes a hormone when the blood sugar rises? Name a digestive enzyme released by this organ. [CBSE Sample Paper, 2008]
3. What does the given experimental set-up demonstrate?



4. A particular hormone requires iodine for its synthesis. Name the endocrine gland which secretes this hormone and state its location in the human body. [CBSE Sample Paper, 2008]
5. Name any two types of tropism. [CBSE Sample Paper, 2010]

2 Marks:

1. What are hormones? Name the hormone secreted by thyroid and state its function. [CBSE 2010]
2. I. Label the two parts indicated by question marks and labelled 1 and 2 in the diagram.
II. Suggest a suitable caption or heading for the diagram.



3. The given experimental set up tests the response of different parts of plant towards gravity. Use scientific terms for the conclusions. [CBSE Sample Paper, 2008]

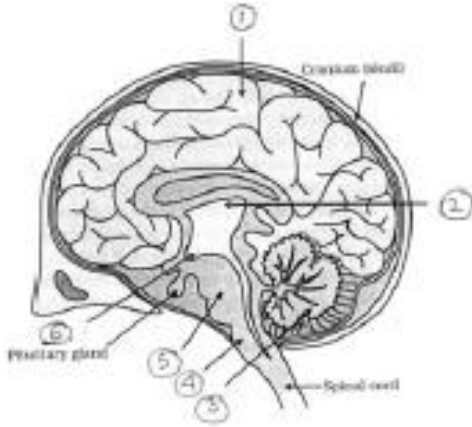


[CBSE Sample Paper, 2008]

3 Marks:

1. What is 'phototropism'? How does it occur in plants? Describe an activity to demonstrate phototropism. [CBSE 2009]

2. Label parts 1 to 6 in the given figure of the brain



[CBSE Sample Paper, 2008]

5 Marks:

1. A) Draw the structure of a neuron and label the following on it:
Nucleus, Dendrite, Cell body and Axon
- B) Name the part of neuron:
 - I. where information is acquired.
 - II. through which information travels as an electrical impulse.

[CBSE 2008]

2. A) Draw a neat diagram of human brain and
 - I. Label Medulla and Cerebellum
 - II. Write the functions of the above mentioned parts

[CBSE Sample Paper, 2017]

- B) "Both overproduction and underproduction of Growth hormone leads to disorders in the body." Explain.

